

# THRESHOLD RAMPS

## DS RAMPS

The DS4076 and DS4025 are folding threshold ramps made of aluminium with an anti-slip surface. The ramps have two milled handles and are equipped with a longitudinally running hinge for folding. Suitable for threshold heights from 2 to 5 cm. A comfortable carrying bag is included for DS4025.



The DS2176 is a mobile height adjustable threshold ramp in aluminium with an anti-slip surface. The 3+3 supplied feet are adjustable from 3 to 7 cm.



DS ramps	DS2176	DS4025	DS4076
Length	76 cm	40 cm (x 2)	40 cm
Width	21 cm	25 cm (x 2)	76 cm
Weight	1,55 kg	2 kg (for both)	3,3 kg
Max. load	350 kg	350 kg	350 kg
Max. elevation/height	3-7 cm	2-5 cm	2-5 cm

## RUBBER RAMPS

Rubber ramps with anti-slip surface for use among others in bathrooms and at doorsteps. The ramps come in two versions: with glue protected by a folio and without glue. The ramps are available in widths of 700 mm, 900 mm or 1000 mm. If the standard ramps are too long, they can be easily cut with a Stanley knife.



Available in:

- 20 various heights from 4 to 72 mm
- 3 widths from 700, 900 or 1000 mm

Please ask for the info sheet about the rubber ramps

# TELESCOPIC RAMPS

## TM RAMPS

The ramps are made of aluminum. The perforated lanes provide an ideal balance between weight and durability. In addition, the permeability is advantageous in rain, dirt or snow. The height of the side profile provides sufficient grip and directional stability. The ramps consist of two separate drive-on rails. The model TM-055 consists of one single segment. The model TM-150 and TM-210 consists of two telescopic segments, model TM-300 has also a further element, which is foldable. In the folded state, the ramps are secured by a clip closure. The TM ramps must be used in pairs.



TM ramps	TM-055	TM-150	TM-210	TM-300
Length	55 cm	150 cm	210 cm	300 cm
Width (per rail)	25 cm	25 cm	25 cm	26 cm
Surface width	20 cm	20 cm	20 cm	20 cm
Height of side protect.	5,5 cm	5,5 cm	5,5 cm	5,5 cm
Max. elevation / height	12° / 11 cm	12° / 30 cm	12° / 42 cm	12° / 60 cm
Weight	2 x 1,45 kg	2 x 3,95 kg	2 x 5,8 kg	2 x 8,65 kg
Max. load per pair	300 kg	300 kg	300 kg	250 kg
Folded size cm (LxWxH)	55 x 25 x 5,5	98 x 27x 9	128 x 27 x 9	108 x 26 x 13,5

## TR /LR RAMPS

The ramps are made of aluminium with a friction surface. They consist of two separate drive-on rails with three segments which are provided with a locking mechanism to prevent unintentional extension and retraction of the segments. The models "LR" are equipped with a convenient carrying case that can be attached to the wheelchair. The carrying case is also available for the TR model as an optional accessory (surcharge). The telescopic ramps must be used in pairs.



TR/LR ramps	TR-150	TR-210	TR-300	LR-150	LR-210
Length	150 cm	210 cm	300 cm	150 cm	210 cm
Width (per rail)	26 cm	26 cm	26 cm	16 cm	16 cm
Surface width	19 cm	19 cm	19 cm	10 cm	10 cm
Height of side protect.	7/5 cm	7/5 cm	7/5 cm	5,5/3 cm	5,5/3 cm
Max. elevation / height	12° / 30 cm	12° / 42 cm	12° / 60 cm	12° / 30 cm	12° / 42 cm
Weight	2 x 5,5 kg	2 x 7,5 kg	2 x 9,5 kg	2 x 3 kg	2 x 4 kg
Max. load per pair	225 kg	225 kg	225 kg	180 kg	180 kg
Folded size cm (L x W x H)	74 x 26,5 x 7	95 x 26,5 x 7	125 x 26,5 x 7	74 x 16,5 x 5,5	95 x 6,5 x 5,5

Mobilex A/S  
Grønlandsvej 5  
DK-8660 Skanderborg

Tel. +45 8793 2220  
Fax +45 8793 1777  
www.mobilex.dk



# WHEELCHAIR RAMPS



# SINGLE FOLDED RAMPS

## SC RAMPS

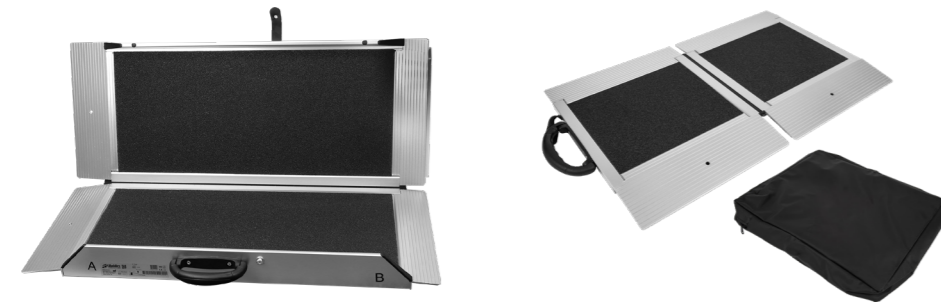
Inexpensive suitcase ramp in aluminium with anti slip surface. Hinged at the middle and carried like a suitcase.



SC ramps	SC-045	SC-060	SC-090	SC-120	SC-150	SC-180
Length	46 cm	62 cm	92 cm	122 cm	152 cm	182 cm
Width	77 cm	77 cm	77 cm	77 cm	77 cm	77 cm
Surface width	76 cm	76 cm	76 cm	76 cm	76 cm	76 cm
Height of side protect	3,5 cm	3,5 cm	3,5 cm	3,5 cm	3,5 cm	3,5 cm
Max. elevation / height	12° / 9 cm	12° / 12 cm	12° / 18 cm	12° / 24 cm	12° / 30 cm	12° / 36 cm
Weight	4,50 kg	6,50 kg	9,00 kg	12,00 kg	15,00 kg	18,00 kg
Max. load	300 kg	300 kg	300 kg	300 kg	300 kg	300 kg
Folded size cm (L x W x H)	45 x 40 x 8	62 x 40 x 8	92 x 40 x 8	122 x 40 x 8	152 x 40 x 8	182 x 40 x 8

## SF RAMPS

The ramps are made of aluminium with a friction surface and are collapsible in the longitudinal direction - a so-called flat-ramp. This offers the opportunity for attendants to be able to stand on the ramp together with the wheelchair and the patient. The ramps are equipped with a carrying handle and hinged at the middle so they are portable like a suitcase.



SF ramps	SF-040	SF-090	SF-120	SF-150
Length	40 cm	90 cm	120 cm	150 cm
Width	71 cm	77 cm	77 cm	77 cm
Surface width	71 cm	73 cm	73 cm	73 cm
Height of side protect.	--	6 cm	6 cm	6 cm
Max. elevation / height	12° / 8 cm	12° / 18 cm	12° / 24 cm	12° / 30 cm
Weight	4 kg	8 kg	10,5 kg	12,5 kg
Max. load	300 kg	300 kg	300 kg	300 kg
Folded size (L x W x H)	45 x 37 x 5 cm	90 x 40 x 10 cm	120 x 40 x 10 cm	150 x 40 x 10 cm

## CARBON FIBRE RAMP CB

Mobile and very light ramp made of carbon fibre. The ramp is equipped with a carrying handle and can therefore be easily carried like a suitcase when folded. Supplied with a bag for the wheelchair.

CB ramp	CB-082
Length	82 cm
Width	78 cm
Weight	3 kg
Max. load	350 kg
Folded size	82 x 39 cm



# DOUBLE FOLDED RAMPS

## DF RAMPS

Made from aluminium and covered with a friction surface. Consists of two ramps that are hinged at the middle and can be carried like a suitcase.



DF ramps	DF-180	DF-240	DF-300
Length	180 cm	240 cm	300 cm
Width (per rail)	79 cm	79 cm	79 cm
Surface width	75 cm	75 cm	75 cm
Height of side protect.	6 cm (inner)	6 cm (inner)	6 cm (inner)
Max. elevation / height	12° / 36 cm	12° / 48 cm	12° / 60 cm
Weight (1 pair)	16 kg	22 kg	27,2 kg
Max. load	300 kg	300 kg	300 kg
Folded size cm (L x W x H)	91 x 36 x 19	124 x 40 x 19	154 x 40 x 19

## SR RAMPS

Made from aluminium with a friction surface. Fourfold foldable one-piece ramp, complete with carrier handle.



SR ramps	SR-180	SR-240
Length	180 cm	240 cm
Width	75 cm	75 cm
Surface width	72 cm	72 cm
Height of side protect.	Outer side: 6 cm	Outer side: 6 cm
Max. elevation / height	12° / 36 cm	12° / 48 cm
Weight	14,1 kg	18,5 kg
Max. load	300 kg	300 kg
Folded size (L x W x H)	102 x 28 x 38 cm	135 x 31 x 38 cm

# CHANNEL RAMP

## CH RAMP

The ramp is made of aluminium with a friction surface and consists of two separate drive-on rails that are hinged at the middle. When folded, the ramp can be carried with two handles like a suitcase. The CH ramp must be used in pairs.



CH ramps	CH-180
Length	180 cm
Width (per rail)	23,5 cm
Surface width	21 cm
Height of side protect. (ext./int.)	6,0 cm / 3,3 cm
Max. elevation / height	12° / 36 cm
Weight (1 pair)	13 kg
Max. load	300 kg
Folded size (L x W x H)	93 x 27 x 21 cm

# TERRACE RAMPS

## TSR RAMPS

Made of aluminium with anti-slip pattern. Suitable for terraces, entrances or in the garden. It can be height adjusted very precisely.

TSR ramps	TSR130	TSR140
Total length (with opened flap)	130 cm	140 cm
Width	80 cm	80 cm
Size of flap	30 x 75 cm	40 x 75 cm
Max. superable height	20 cm	20 cm
Total weight	14,70 kg	16,60 kg
Max. load	225 kg	225 kg
Height adjustment of the feet	15-22,5 cm	15-22,5 cm



**Accessory:**  
Shorter feet for heights 13-20 cm can be ordered as an accessory (TSR501)

## T80-RAMPS

Terrace ramp made of aluminium with anti-slip pattern. The height is easily adjusted by loosening a bolt on each side. It is mounted so that it reaches the upper level of the threshold. Since it has no side-protection, it is also possible to open the door, while the ramp is in use.

T80 ramps	T80060	T80075	T80125
Total length	60 cm	75 cm	125 cm
Width	80 cm	80 cm	80 cm
Max. superable height	12 cm	15 cm	25 cm
Total weight	8,00 kg	12,00 kg	21,50 kg
Max. load	225 kg	225 kg	225 kg
Height adjustment	5-9 cm	8-13 cm	11-28 cm

